

Atmospheres of Democracy Urban Activation of "Sydhavns Plads"

AARCH Student Competition

Danske Bank

Project Brief

Danske Bank together with Danica Pension is inviting students at the Aarhus School of Architecture to participate in the design competition for the urban activation of "Sydhavns Plads" in the Sydhavn district of Aarhus.

The brief is to create an *Urban Activation Furniture* of Re-Use materials, that dares to challenge: what is public assembly? In the age of the Coronavirus, this is ever so relevant.

Making Things Public – Atmospheres of Democracy is an immense editorial and exhibition project; curated by Bruno Latour and Peter Weibel at the ZKM in Karlsruhe in 2005. The project consists of a broad group of more than 100 writers, artists, scientists and philosophers, in a joint effort to create a many-faced collection, that searches for democracy beyond the official sphere of professional politics.

The proposals should seek to create a vibrant and inclusive public realm that links the new neighborhood under construction to its past. The occupation should be temporary and respectful towards the office worker's privacy sphere on the ground floor, but otherwise free to creative exploration and in spirit.

Both group [max 3 persons] and individual entries are accepted. The competition encourage proposals with a good understanding of the three themes and an issue-engaging approach.

The *Urban Activation Furniture* will be on the plaza for at least four years and can be either one whole object or several free-standing objects.

It is the intention that all competition entries will become a publication afterwards.

The winner must take part in the design realization phase and 1:1 construction phase. These phases are supported by fellow students from AARCH and VIA and lead by Kondens.

Notes:

Making Things Public - Atmospheres of democracy | PDF download | www.dropbox.com/s/aalh93eyu5aaitg/MAKING-THINGS-PUBLICtotal.pdf?dl=0

Source: www.bruno-latour.fr/node/333.html

Type & Procedure

Invited competition for students at the Aarhus School of Architecture

See themes, design parameters and general guidelines for delivery requirements

Visit www.sydhavnsplads.dk for information and downloads

Budget – 345.000 DKK including VAT

Schedule

December 15th – Competition is open

January 4th (23:59) – Deadline for questions round I

January 7th – Publication of all answers round I

January 18th (23:59) – Deadline for questions round II

January 21st – Publication of all answers round II

February 12th (23:59) – Submission deadline

March 1st – Winner is announced

April – Design Realization workshop

June / July – Construction phase

Prize

1st Prize

30.000 DKK & Individual art piece from Danske Banks archives

2nd Prize 10.000 DKK

Jury

Poul Nielsen, Head of Market Area, Business Banking, Danske Bank

Dorthe Krüger, Vice President, Large Real Estate, Realkredit Danmark / Danske Bank

Robert Nellemann, Head of Property Development & Governance Danica Pension

The City Architect of Aarhus

Kristine Leth Juul, Prorector AARCH

Lene Hammer, TRANSFORM

Peter Skjalm - Association Sydhavnen

Professional advisory

Michael Green, Arkitema

Eske Bruun, Kondens

Søren Hornstrup, Consulnt Danica Pension

Bettina Fornitz, Art Curator Danske Bank

Competition Development & Layout

Kondens





The Desires For The Site

Theme I - Temporary Stay & Enhancing Connections

The *Urban Activation Furniture* must offer a temporary place to sit for the office workers, the neighborhood's inhabitants and visitors. While also enhancing the connections to the other areas of the Sydhavn district.

How do these different groups overlap, move, interact and relax?

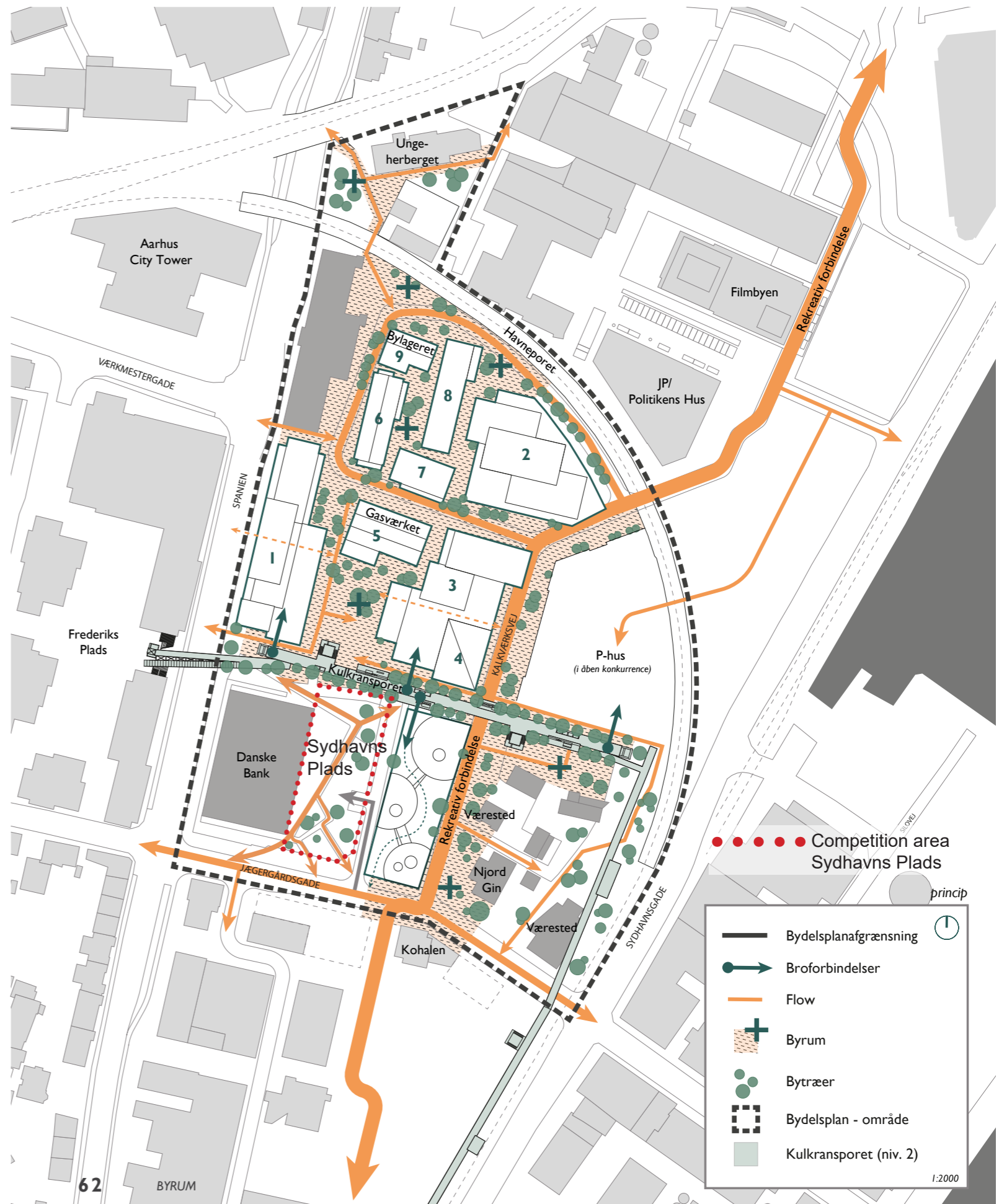
Theme II - Expo for the new Sydhavn

The temporary installation on the plaza will be one of the only constants in an area on the verge of an extreme transformation. How can the *Urban Activation Furniture* hold exhibitions that showcase the future of the neighborhood and its past?

Theme III - Play, Joy & Fun

The project should encourage playful activities and interaction for all ages.

How do the different seasons change the type of play?





← Kulkransporet

Jægergårdsgade →

Underground
Parking
Entry

Lightly touch the green

Rough touch possible on the grey

GDPR Sphere

Facade service way

Design Parameters

Parameter I - The Grey

The Grey concrete tiles is the rough canvas of the site. Here the Urban Furniture can be bolted or otherwise attached to the ground.

Parameter II - The Green

The proposal can also be within the green wilderness. However, the design should tread lightly and not destroy existing plants. A design principle for the connection is a must.

Parameter III - Service way

The Danske Bank building's facade needs to be cleaned and maintained over time. A skylift is required to do so. This means that a distance to the facade of 4,5 meters must be kept.

Parameter IV - GDPR Sphere

The ground floor towards the site contains a Café and Realkredit Danmark. The latter operates with GDPR sensitive material. Therefore no temporary stay within this sphere.

Parameter V - Installations

The proposed project can be connected to the plaza's existing power grid. No other supply, such as water, is possible to be connected to.



Timeline: From Idea to reality

Winning proposal is announced

Design Realization workshop - AARCH x VIA

The winning team will present their proposal to fellow students from AARCH and VIA. In the first week re-use materials will be mapped and their sustainability potential assessed by the collection of students and Kondens. In the following week, the project will be planned in both in detail and totality. Groups of students will be given the responsibility of one detail each.

Duration: 2 weeks in April

1:1 Architecture - AARCH x VIA

The winning team with fellow students from AARCH and VIA will be in charge of the construction of the project at the site. The phase will be supported by Kondens's team of Craftspeople, Architects and Constructing Architects.

Duration: Depending on the proposal's scale, complexity and construction method. Planned for in June / July

General Guidelines

The entries must be submitted electronically as two separate PDF files not exceeding 10 MB each. Each entry should contain the following documents with everything in Danish or English. Both documents delivered must include the name of the project, but must not contain any information that would identify the entrant. Proposals can be portrait or landscape format.

Project summary, (Page one), A3 size

- o 1 page maximum
- o A maximum 200 words text describing the project and the visitor experience.
- o An atmospheric visualization of the project

Project material, (Page two), A2 size

- o A 1:200 site plan
- o Freedom of choice for representation material that will enhance the understanding of the proposal
- o A construction principle (two if the proposal is also in the green "wilderness")

Important notes:

Entrants must show, in their proposal, an understanding of the project approximately material budget of 200.000 DKK incl. VAT (of the total budget of 345.000 incl. VAT.) and secondly the student Co-Building construction phase. The construction methods must correspond to the hands-on level of an architect student. e.g. large scale woodworking is feasible, while only small scale welding is feasible.

The proposed project must be sustainable both in materials re-used and in durability (low maintenance).

The winning team must participate in the planning and construction phases. The prize will be paid upon completion of the project.

Submission must be submitted online to sydhavnsplads-submission@arkitema.dk on February 12th (23:59). Name and email of the proposals contact person must be added to the email.

Submissions will be reviewed in printed hard copies (No digital linked content, such as videos or hyperlinks, will be presented).

Registration is not necessary.

Questions regarding the competition must be sent to the email sydhavnsplads-questions@arkitema.dk on January 4th (round I) and on January 18th (round II) before midnight at the latest.

Answers to the questions will be published on www.sydhavnsplads.dk on January 7th (round I) and on January 21st (round II).

The competition committee has the right not to realize the winning proposal.

The user rights to the First and Second prize proposals belong to Danske Bank.

The Artistic rights to the proposals belong to the designer(s).

Danske Bank has the right to publish all entries as an online-booklet.

Appendix,

Files can be downloaded from the competition website www.sydhavnsplads.dk

- o A digital site plan
- o Aerial photos from the site
- o links

Inspiration board I

”..En tur til døden og tilbage igen - en cyklisk bevægelse, en livseudvikling, en start, en slutning, en skabelse og en forsvinden. Heraf kommer værkets titel *Vejen ind, er vejen ud*. Der er i denne titel også indlejret en mulighed for transformation, en dobbeltbevægelse af udrulning og sammenrulning. Her står man så som beskuer, midt i denne labyrintiske verden af gentagelser og monotoni. Man går af endeløse gange, og pludselig finder man ind til denne monotone rytme/puls, som gør, at man kan ”tømme” hjernen, falder ned og åbner op.”

Jesper Dalgaard



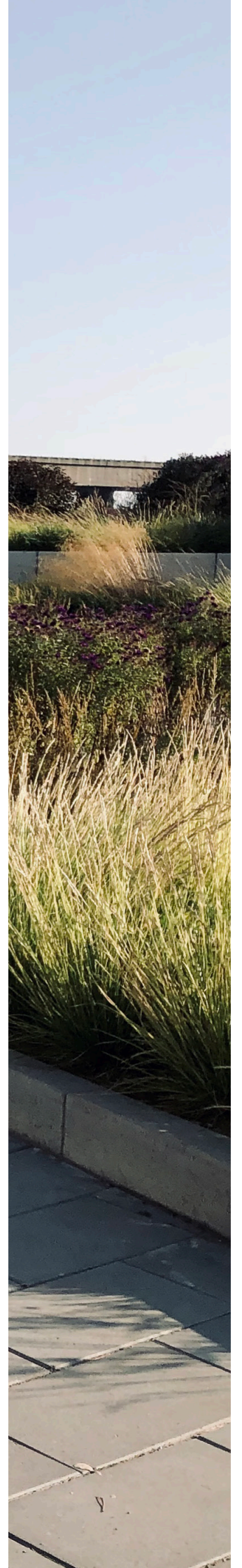
Vejen ind er vejen ud
Labyrint,
Jesper Dalgaard
2017
Horsens
Source: Statens Kunstfond



Built with the one-hundred tons of waste material generated by the dismantling of the previous biennale, the 'introductory room' features an installation that showcases 14 kilometers of metal studs suspended from the ceiling. complementing this, 10,000 square-meters of plaster walls divide each space and serve to show different project information.

'Introductory room' (100 tons of Waste)
Alejandro Aravena
2016

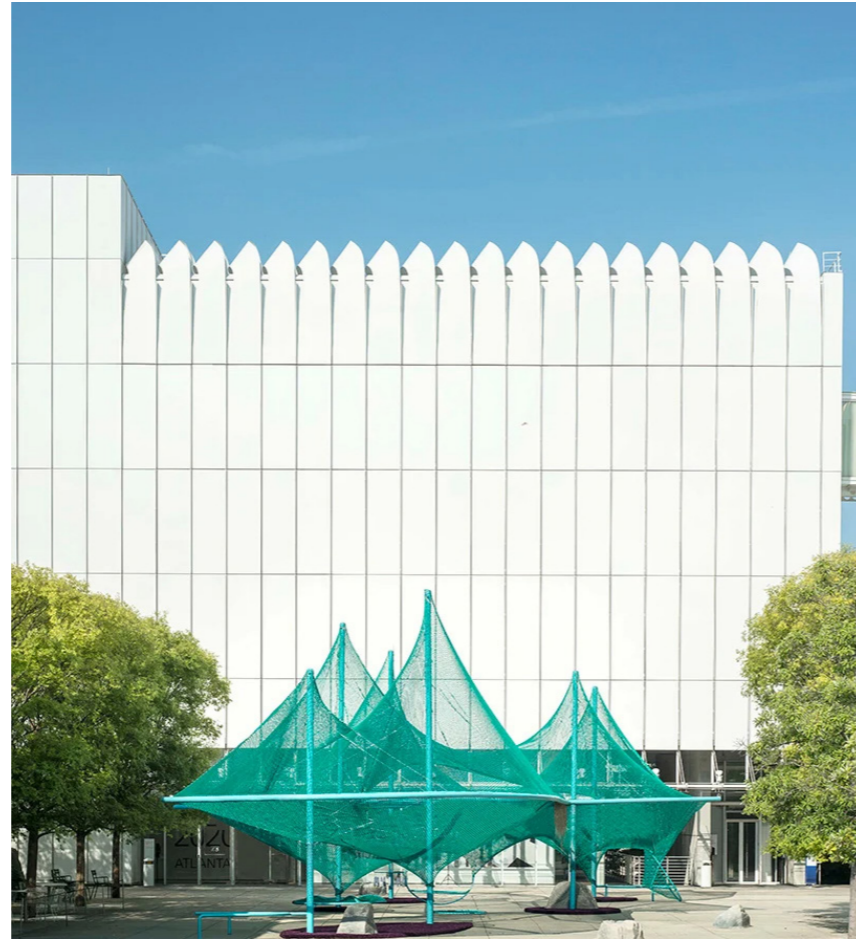
Venice Architecture Biennale
Source: DesignBoom



Inspiration board II



Murmuration
SO-IL
2020
The High Museum of Art, Atlanta
Source: DesignBoom



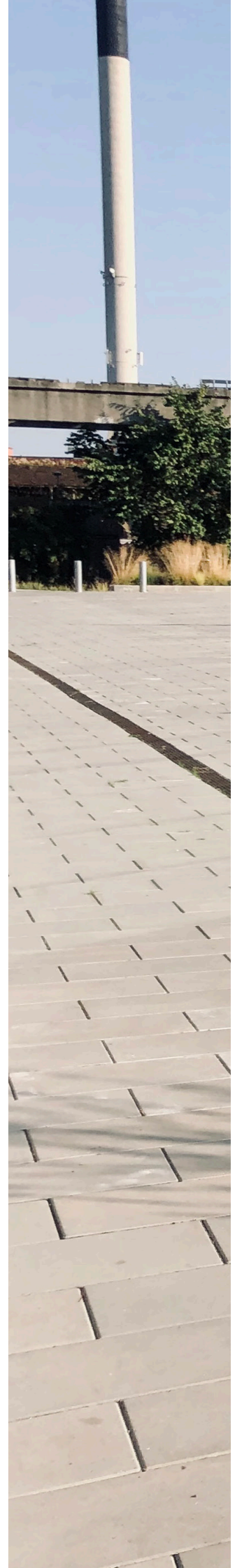
The canopy, which appears as a bird murmuration, integrates bird feeders, seating perches, and other elements that encourage interaction, while spurring conversations around biodiversity, extinction, and co-habitation.



The Endless Stair
dRMM
2013
London Design Festival
source: Dezeen



"Stairs are always the most interesting things about architecture, they're places where people meet,"
dRMM co-founder Alex de Rijke



Inspiration board III

"Out of investigating architecture, communication, and social behaviour in the urban space, a series of bench designs was born under the common title Modified Social Benches. The bench designs borrow their basic form from the ubiquitous park or garden bench, but are altered to various degrees to make the act of sitting a conscious physical endeavour. With their modifications, the benches transform their surroundings into places of activity rather than rest and solitude; they foster exchange between the users and the passers-by, thus lending the work a social quality. Due to their alterations, the benches end up somewhere between a dysfunctional object and a functional piece of furniture, and therefore demonstrate the contradiction between artwork and functional object."

Jeppe Hein



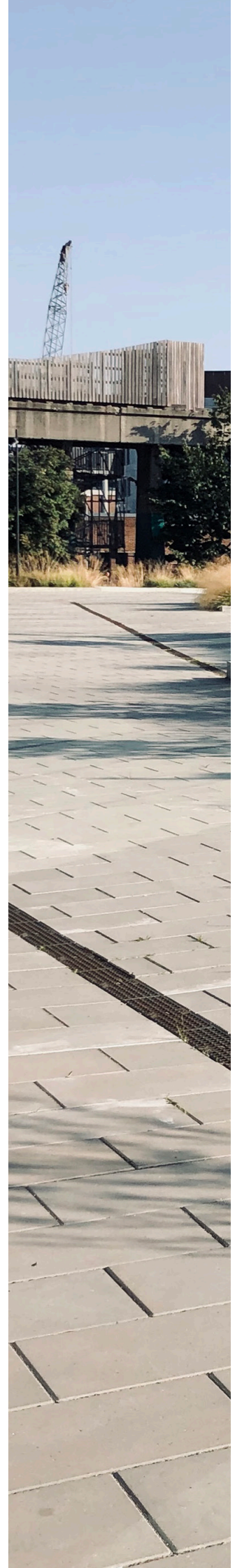
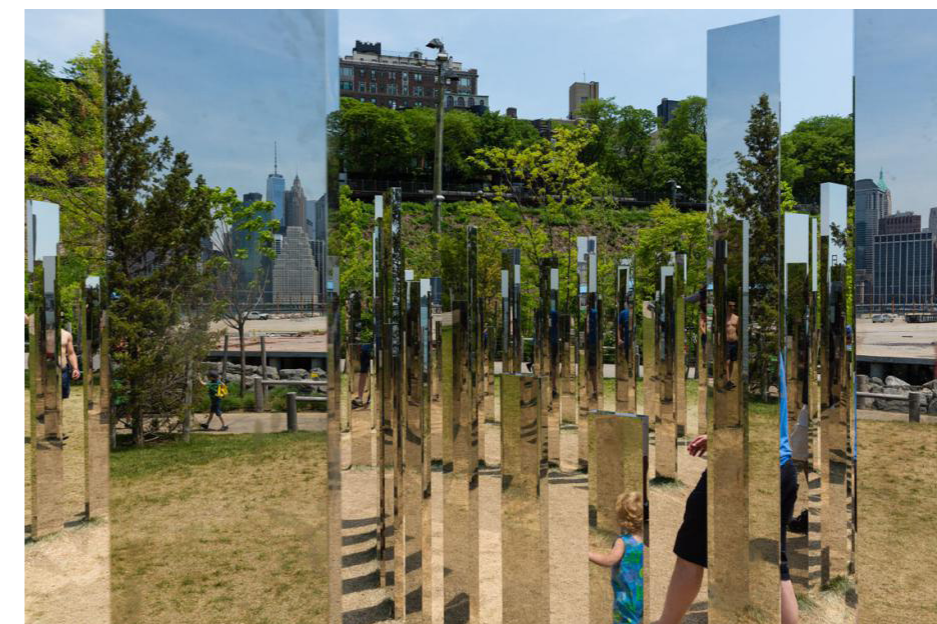
Modified Social Benches L-U
Jeppe Hein
2008
All over the Globe
Source: www.jeppehein.net

"The accessible labyrinth is made of freestanding mirrored lamellae forming three curves that merge into one another. The heights of the lamellae vary creating an irregular form that refers to the skyline of Manhattan opposite to the park. The mirrored surfaces reflect not only the viewers and their surroundings, but also the adjacent mirrors. Physical space is visible in the gap between the vertical lamellae, and is inserted between the mirror images. The multifaceted reflection therefore produces a fragmented view of the space, surrounding the viewer with an unfamiliar and disorienting environment similar to that of a labyrinth. By echoing the skyline of Manhattan in its form and its reflection of the surroundings, including the skyscrapers on the opposite side of the shoreline, the Mirror Labyrinth New York builds a visual bridge between Manhattan and the Brooklyn Bridge Park offering an exceptional view of the city."

Jeppe Hein

Mirror Labyrinth, NY
Jeppe Hein
2015

Brooklyn Bridge Park, New York
Source: www.jeppehein.net



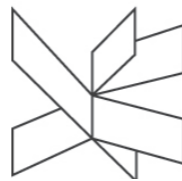
Partners

Danske Bank

Danica Pension



ARKITEKTSKOLEN AARHUS



VIA University
College

Kondens
Office of Democratic Architecture

Hornstrup
 Consulting

Arkitema ..